

Lab 14: Topographic Maps



Construct a 3-dimensional model using the topographic map shown in Diagram A.

The model should result in appearing similar to Diagram B when viewing the model from the side.

Diagram A. Top View – Looking Down

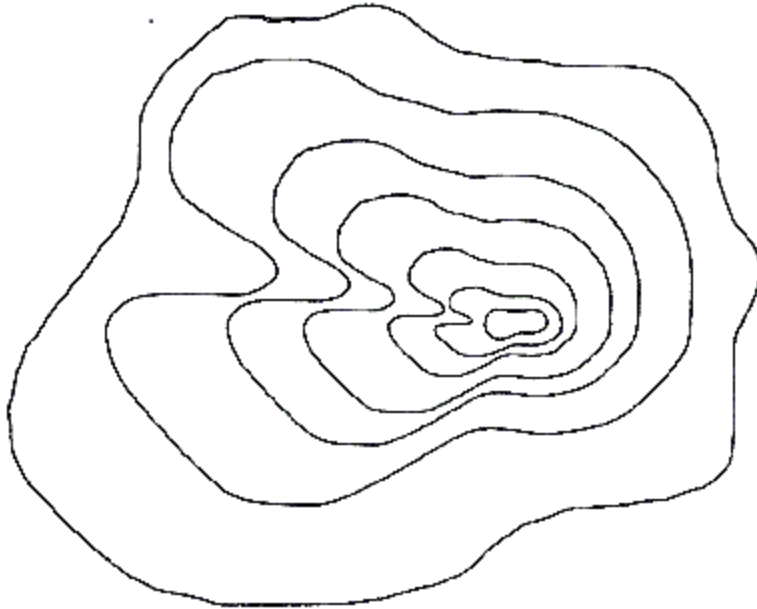
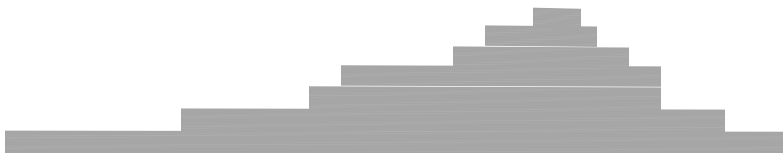


Diagram B. Side View – Looking From the Side



Instructions:

1. Carefully, cut out each of the seven shapes.
2. Trace each shape 10 times on a poster board.
3. Cut out each of the 70 shapes (7x10) from the poster board.
4. Set aside all 10 of each shape into a neat stack.
 - *Make seven stacks of 10 identical shapes*
5. Lightly glue/secure together each group.
 - *Glue together each group of 10 identical shapes*
 - *This results in seven "thicker" versions of each shape*
6. Stack groups starting with biggest on bottom to the smallest.
7. Arrange the stacks as shown in Diagram A and B.
8. Glue the stacks together.

