

Maps (Part 2)

Technique

Summarize main points from each video.

Title / topic _____

Title / topic _____

Title / topic _____

Topic Introduction

Summarize your understanding of each paragraph.

A topographic map is a type of map. Many of these show hills and valleys. Sometimes they show more than just hills and valleys. For example, a topographic map might illustrate the deep and shallow parts of a lake.

The word used for terrain when it has ups and downs (hills and valleys) is called “relief.” Topographical relief involves the vertical and horizontal dimensions of land surface.

You can think of relief as being “the lay of the land.” In physical geography terrain is described in terms of the elevation, slope, and orientation of terrain features. A topographical map is a flat, two-dimensional image that illustrates the three-dimensions of terrain.

Topographic maps show ground relief (landforms and terrain), drainage (lakes and rivers), forest cover, populated areas, transportation routes (including roads and railways), and other man-made features.

Read/Summarize Text



1. Read the passage.
2. Underline key expressions in each sentence.
3. Re-write each word (or expression) you underlined.
4. Summarize the passage.

Topographic map.

A topographic map is a kind of map which uses contour lines or other ways to show elevation and topography. Topo maps are usually very detailed, with a large scale, though some are not. These maps are prepared based on a detailed survey of the areas concerned.

Topographical maps may be used for many purposes. They show relief features, rivers, land use, vegetation, settlements, roads, railway lines and administrative units and their boundaries. These maps are revised periodically to update them. Town guide maps are based on them.

https://simple.wikipedia.org/wiki/Topographic_map

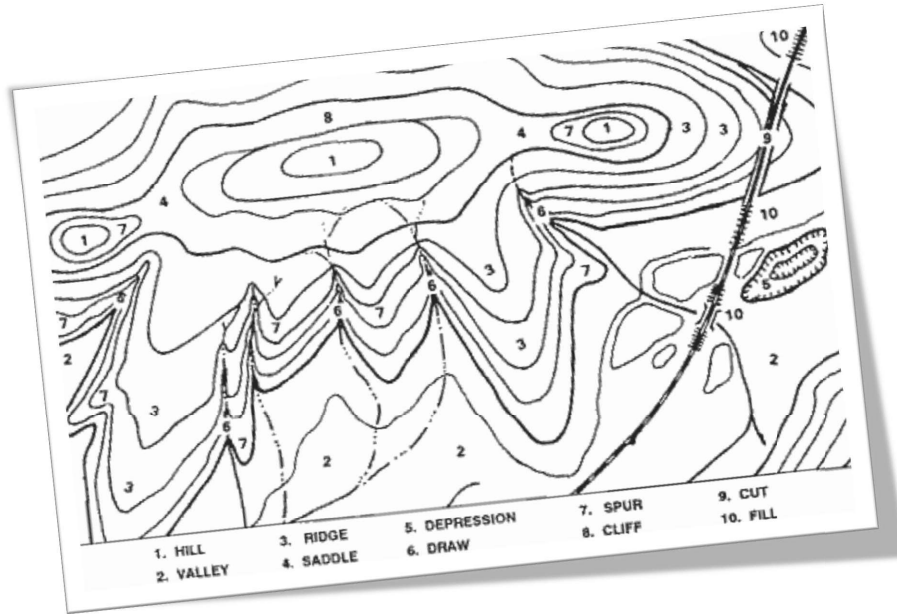
Re-write words you underlined

Using a complete sentence, summarize or rephrase the passage

Read Text for Comprehension

Read this article for deeper understanding. No summary is required, although you may want to circle, underline, or mark key ideas and words.

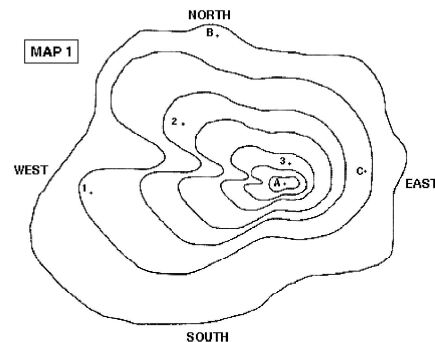
Here is an example of a topographic – or “*topo*” – map. Notice how the lines on the map curve. There are a few places where the lines make a shape similar to a circle or an ellipse.



BACKGROUND INFORMATION

Topographic maps are used extensively by a variety of people including geologists, field biologists, and hikers. A topographic map is the representation, on a flat surface, of part of the Earth's surface drawn to scale.

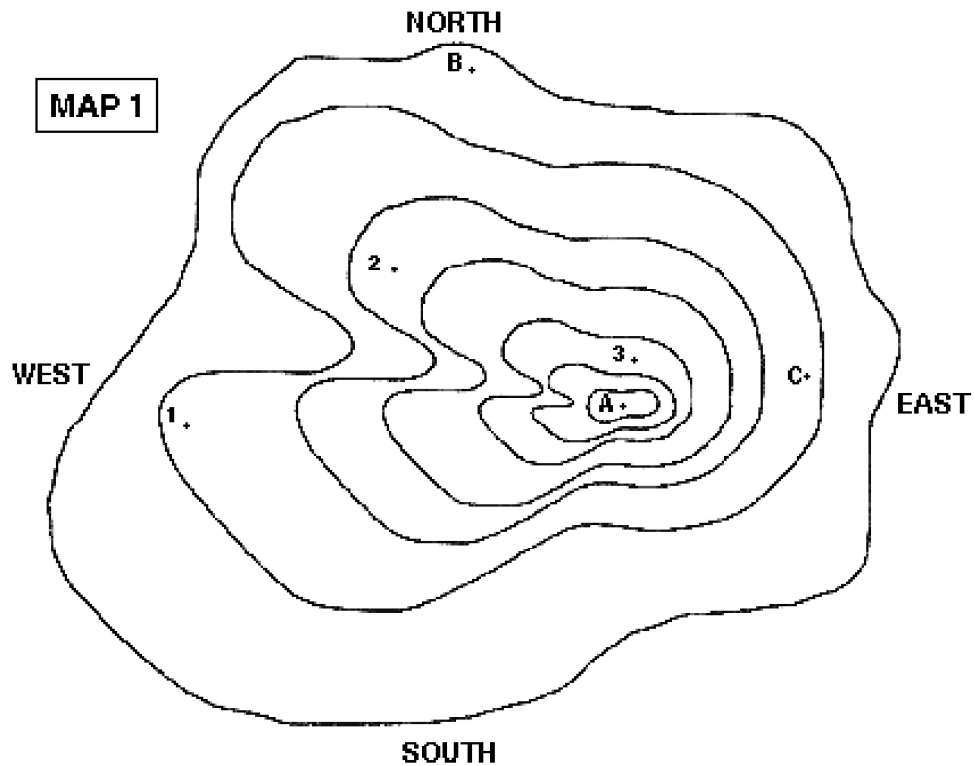
Relief — The features shown on topographic maps may be divided into three groups: (1) relief, which includes hills, valleys, mountains, etc.; (2) water features, including lakes, ponds and streams; and (3) cultural features, man-made features like bridges, canals, buildings and roads.



Draw Illustration



Copy and Label the Illustration in the Space Provided



<http://www.ucmp.berkeley.edu/fosrec/Metzger1.html>

Draw (Copy) the Illustration Here

Interpret a Graph



Write the title of the graph _____

Circle the type of chart this represents

Bar Chart Line Chart Pie Chart Other

If applicable,

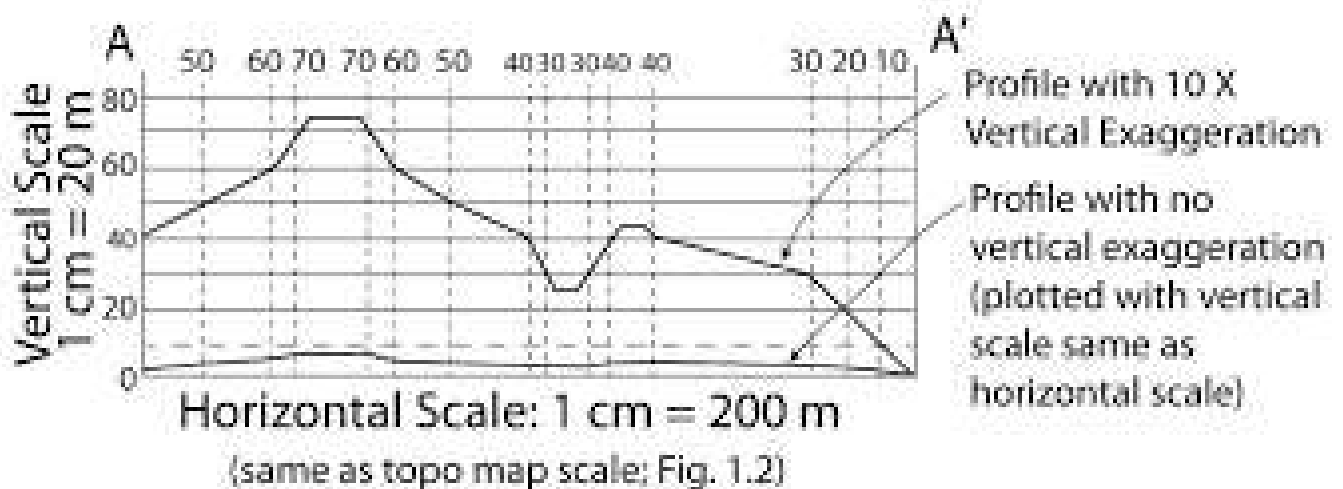
What does the X-axis represent _____

What does the Y-axis imply _____

Summarize what this graph represents or conveys

<https://bostoncollege.instructure.com/courses/1563771/pages/virtual-lab-1-topographic-maps-contours-and-making-cross-sections>

Fig. 1.3 Topographic profile along line A-A' in Fig. 1.2.



Show-Off Your Smarts!



Instructions

- Complete as an individual or small group.
- Discuss your ideas/answers/responses in a small group.
- Select one person to present your responses to the class.

Q1. How can information be applied to your life (*today, or in the future*)?

Q2. How might this information apply to (*or, impact*) communities?

Q3. In the late 19th century (the 1800s), surveyors created topographic maps in the field. What do you imagine these were used for?

Write a “Topographic Map” Story

Write a 70-word fiction story about a person living in 1878. Consider naming your character one of these names: *Abdalla, Ahanu, Bo, Bourey, Chin, George, Jing, Kiri, Mary, Taabish, or Yaakov*.

[illegible]