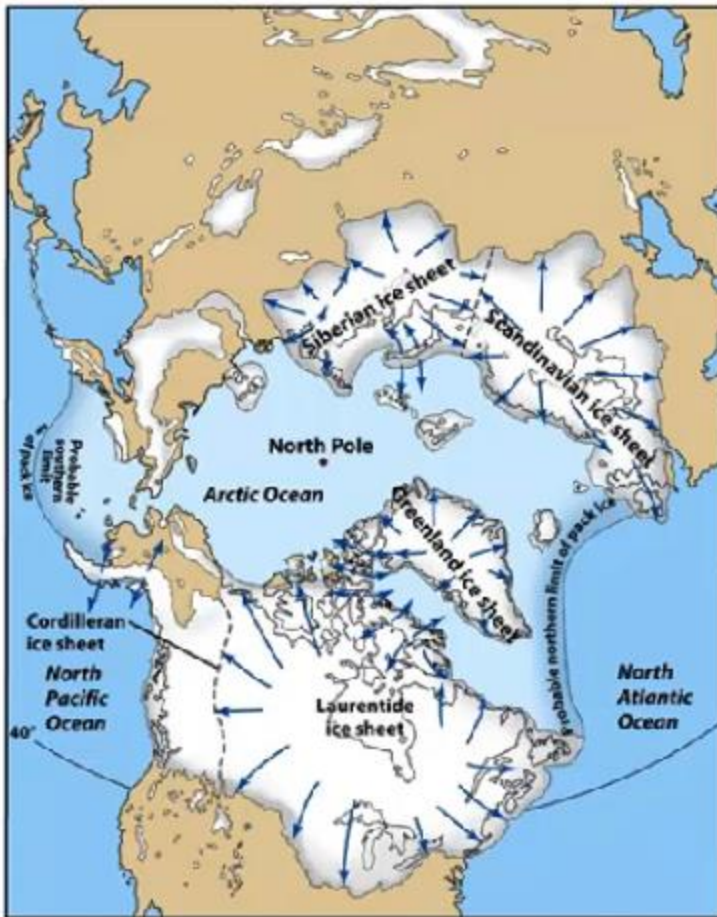


Maps Related to Weather Topic

Two Climate Maps from the Videos

Quaternary Glaciation



Ice Sheet	Area	Volume
Antarctic	$12 \times 10^6 \text{ km}^2$	$23 \times 10^6 \text{ km}^3$
Greenland	$2 \times 10^6 \text{ km}^2$	$3 \times 10^6 \text{ km}^3$
Laurentide	$13 \times 10^6 \text{ km}^2$	$29 \times 10^6 \text{ km}^3$
Cordilleran	$2 \times 10^6 \text{ km}^2$	$3 \times 10^6 \text{ km}^3$
Scandinavian	$7 \times 10^6 \text{ km}^2$	$13 \times 10^6 \text{ km}^3$

What is Wind? <https://youtu.be/S8wor5E5Xbo>

Map of Climate Zones

