

Oklahoma Maps

Upward Bound 2020
Earth Science

Instructions

Select the best response for questions 1-20.

Select your responses on the Survey Monkey provided by Honeycutt.

Map A

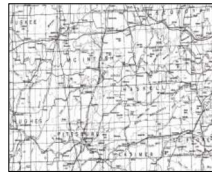
- 1.
- 2.
- 3.
- 4.



Earthquakes

Map B

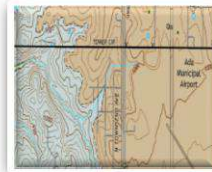
- 5.
- 6.
- 7.
- 8.



Base Map

Map C

- 9.
- 10.
- 11.
- 12.



Topographic

Map D

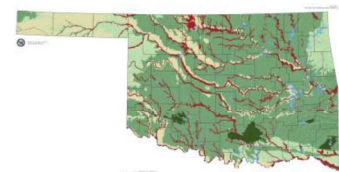
- 13.
- 14.
- 15.
- 16.



Rainfall

Map E

- 17.
- 18.
- 19.
- 20.

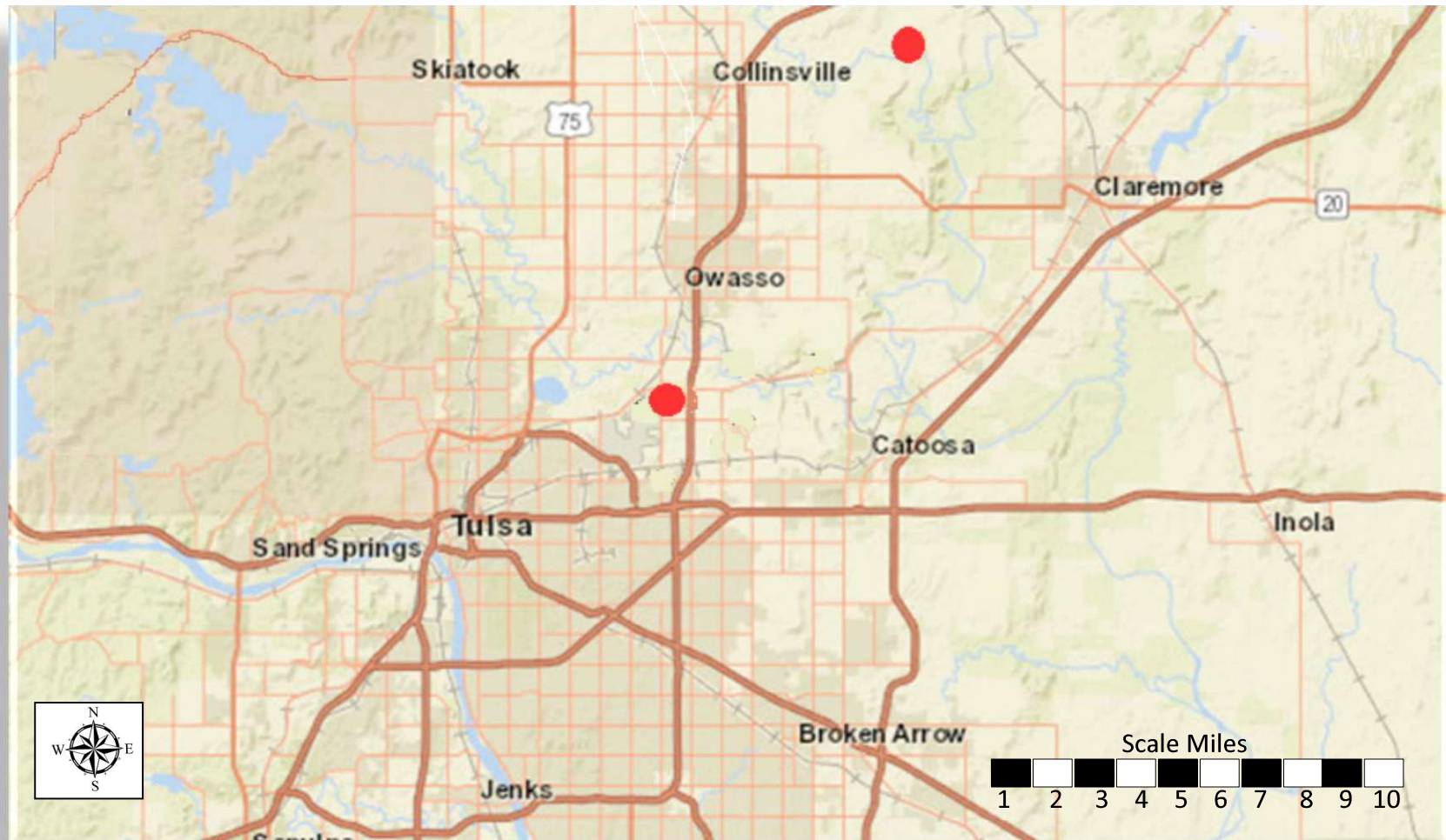


Geological

Map A

This map identifies the epicenter (location) of two earthquakes.

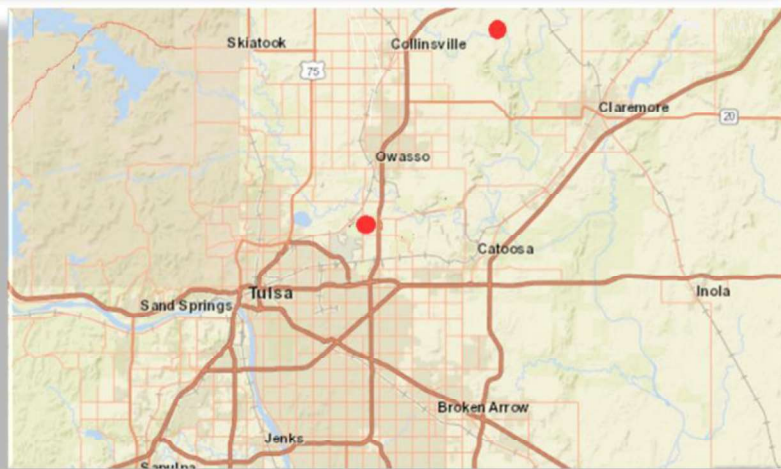
Oklahoma Geological Survey Earthquake Viewer



Map A

This page shows data associated with each earthquake.

Oklahoma Geological Survey Earthquake Viewer



Tulsa

GMT Time: Mon, 15 Jun 2020 16:00:25 GMT
Local Time: 6/15/2020, 11:00:25 AM
Magnitude: 1.6
Depth: 0 km
Latitude: 36.215
Longitude: -95.86516667
County: Tulsa
Status: Reviewed

Collinsville

GMT Time: Mon, 15 Jun 2020 17:33:27 GMT
Local Time: 6/15/2020, 12:33:27 PM
Magnitude: 1.4
Depth: 0 km
Latitude: 36.38283333
Longitude: -95.72316667
County: Rogers
Status: Reviewed

Map A

Select the best response for each question.

1. Which response best describes the sequence of the two earthquakes?

- A They happened at the same time.
- B Tulsa earthquake happened first.
- C Collinsville earthquake happened first.
- D They happened on different days.

3. Which response best describes distances represented by the map?

- A Width of the map represents about 35 miles.
- B A highway runs from Catoosa to Claremore.
- C The earthquakes were about 35 miles apart.
- D Inola is more distant to Tulsa than Arkansas.

2. Which response best describes the relationship of the epicenters of the two earthquakes?

- A Skiatook was east of the Collinsville quake.
- B Broken Arrow was north of Collinsville quake.
- C Collinsville quake was northeast of Tulsa.
- D Inola was west of both quakes.

4. Which response best describes the magnitude of the two earthquakes.

- A Collinsville quake was northeast of Tulsa.
- B Collinsville magnitude happened first.
- C Magnitude is Catoosa-Claremore topographic.
- D The Tulsa quake had the largest magnitude.