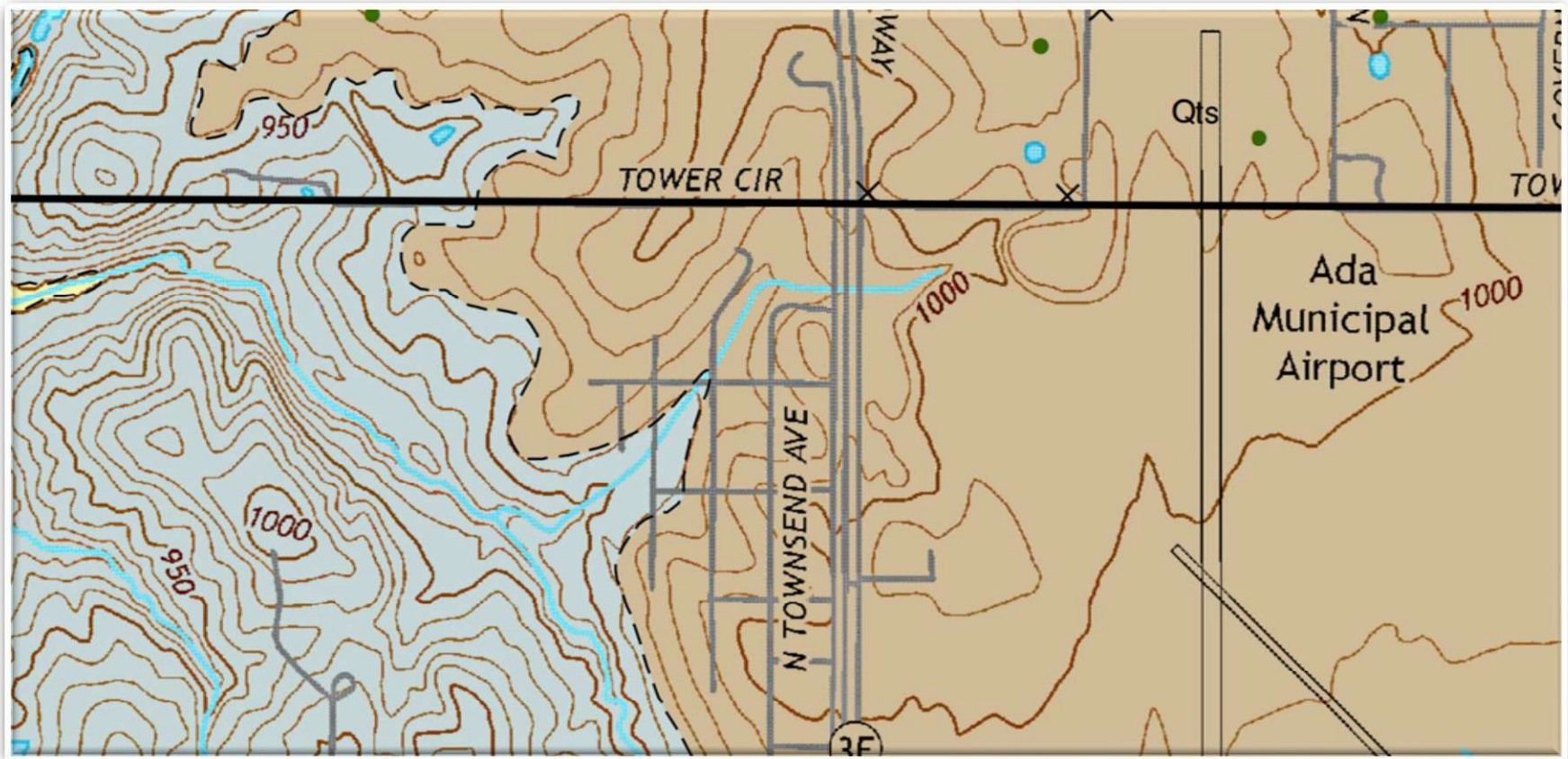


Map C

This map is a topographic map near the Ada airport.



Adapted/extracted from:
ogs.ou.edu/docs/OGQ/OGQ-93-color.pdf

Map C

Select the best answer for each question posed.

9. Which statement is supported by Map C?

- A N. Townsend Ave. runs north-south.
- B The airport is located near a museum.
- C The contour lines should be straight.
- D The scale shown describes map distances.

11. Which statement best describes the type of this map (Map C)?

- A This is a geological/lithology survey.
- B This is part of an Oklahoma base map.
- C This is a contour map showing elevations.
- D This is a weather map shown tornado paths.

10. Which statement is supported by Map C?

- A Sequoyah is northwest of Pittsburg County.
- B The scale is in 5 mile increments.
- C The map shows elevations.
- D The museum features dinosaurs.

12. Which idea can most easily be inferred or confirmed by Map C?

- A Sans Bois Mountains are rich with wildlife.
- B The airport's elevation is similar to a nearby hill.
- C Rainfall at Ada airport is about 1,000 mm/year.
- D Rainfall at Ada airport is about 1,000 cm/year.