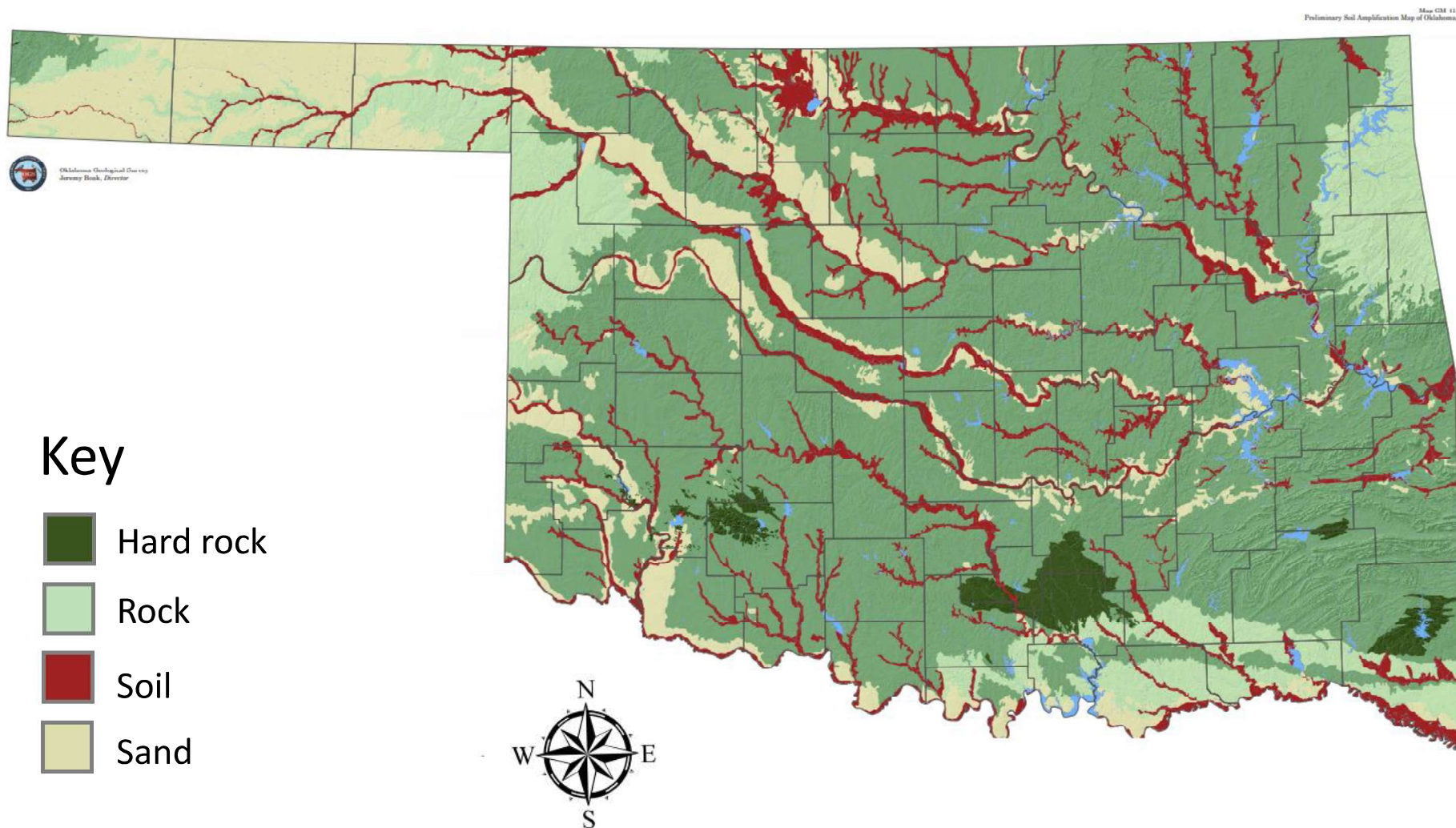


Map E

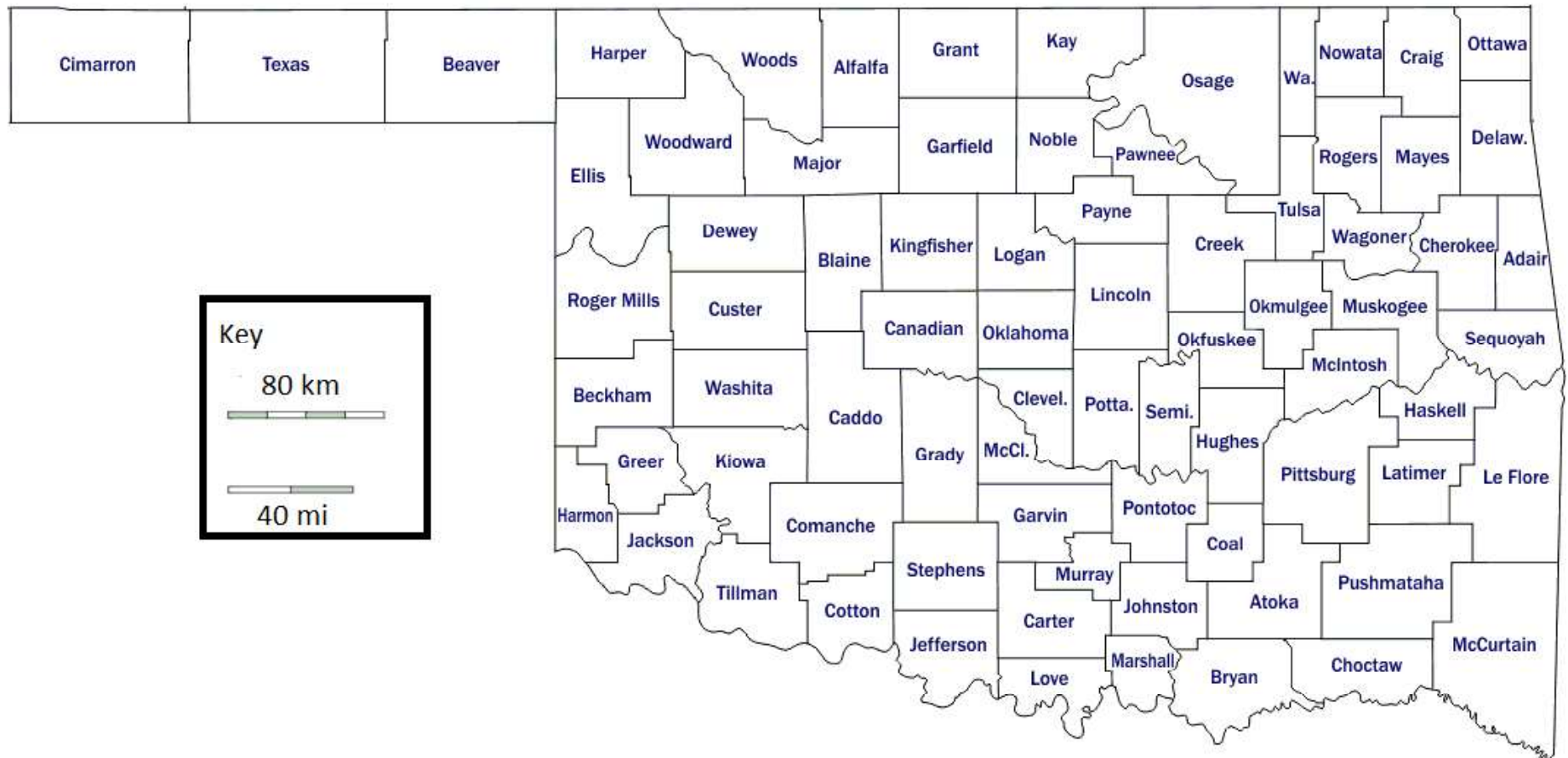
This map is a geological map of Oklahoma.



Adapted/extracted from:
ogs.ou.edu/docs/geologicmaps/GM41.pdf

Map E

This map of Oklahoma shows the counties.



Map E

Select the best answer for each question posed.

17. Which counties have the highest percentage of hard rock?

- A Custer and Blaine
- B Cimarron and Texas
- C Cherokee and Adair
- D McCurtain and Johnston

19. Which county is in the northeast corner of the state?

- A Cimarron
- B McCurtain
- C Harmon
- D Ottawa

18. Which county has the highest percentage of soil?

- A Alfalfa
- B Stephens
- C Adair
- D Johnston

20. According to the key, which is represents the farthest distance?

- A 40 km
- B 40 miles
- C 4,000 meters
- D 4,000 or more